

# Case Study

## MMH Sandwell & West Birmingham Hospital

**Customer** NHS – SANDWELL & WEST MIDLANDS

**Location** Smethwick

**Requirements**

Midland Metropolitan Hospital (MMH) is a brand new, state-of-the-art acute hospital that will offer emergency department, maternity, children's, and adult acute inpatient services to half a million people. The hospital needed the best cabling infrastructure to support their network and IP-connected devices.

**Equipment**

**Copper**

3,200 boxes of 190-191-305m Cat6a UFTP B2CA  
17,000+ Cat6a Outlets 100-181  
Total of 19,550 Patch Leads - 1m, 2, 3m, 5m & 10m – Various Colours

**Fibre**

11KM x 205-328 OS2 24C TB Fibre  
2KM x 200-156 OM3 8C TB Fibre  
47 x 200-476 EXCEL 24 WAY SM F/PANEL-24 LC DX 48F BU  
34 x 200-474 EXCEL 24 WAY SM F/PANEL-12 LC DX 24F BU  
46 x 200-472 EXCEL 24 WAY SM F/PANEL-8 LC DX 16F BU  
350 x 200-650 EXCEL OS2 1M LC PIGTAIL 9/125 SET OF 12 YELLOW  
20 x 200-645 EXCEL OM3 1M LC PIGTAIL 50/125 SET OF 12 AQUA  
Along with associated splice protectors & fibre patch leads  
12KM x 208-813 Excel Enbeam SM G.657.A1 Blown Fibre EPFU 8 Fibre  
8KM x Internal 2, 7 & 12 Way Tube

**Racks and Accessories**

78 x 542-4288-WDBF-BK Excel ER 42U 800W 800D-Black  
20 x Z-544-5288-WDBR-BK Excel SR 52U 800x800-WDBR BK  
2 x Z-544-52810-WDBR-BK EXCEL SR 52U 800W 1000D-BLACK  
98 x 542-044-BK Excel Environ 4 Way Roof Fan Tray - Black  
53 x 542-006 CR/ER Earth Bonding Kit - 6 wires  
21 x 542-150-42-BK Excel Environ Cable Tray 150mm-42U-Black PK2  
1 x WB21.6SGB Excel Environ WR 21U 600mm Deep - Black  
3 x WB15.6SGB Excel Environ WR 15U 600mm Deep – Black

**Labelling**

20,671 x Outlet Labels  
838 x Panel Labels



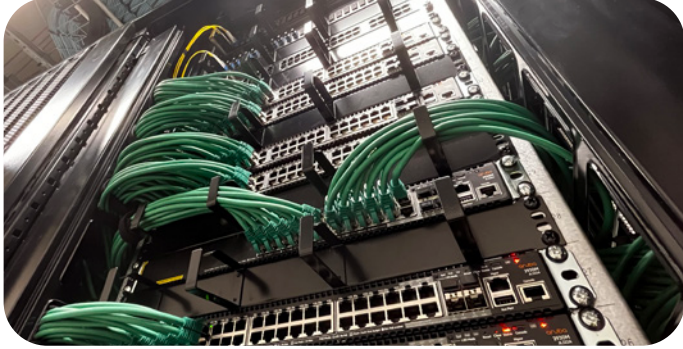
### An Overview

The Midland Metropolitan Hospital (MMH) is a new acute general hospital that has been built on a 16-acre site in Grove Lane in Smethwick near Birmingham. The hospital will have 670 beds and 15 operating theatre suites. The structured cabling infrastructure for the hospital was designed and installed by North and Excel in partnership. The structured cabling infrastructure was based upon the CENELEC cabling architecture principles and one of the challenges was to ensure the design strategy could support current and future information system technologies with minimum future disruption or change. North and Excel's teams had the experience and expertise to easily demonstrate and plan for key dates, such as the room ready dates for the Main Equipment Rooms (MERs) Satellite Equipment Room (SER).



## Sourcing a partner

NHS Sandwell & West Midlands requested tenders from a wide range of installers and the decision was made after an adjudication process which included factors such as experience and cost. They were looking for a solution that offers full end-to-end structured cabling. Excel has been used by other hospitals worldwide and was an approved brand by the consultant and the NHS, which made securing the contract easier.

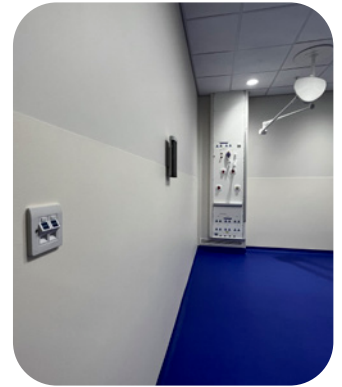


## The right product

The encompassing cabling contract included copper data cable and fibre optic systems and data racks, so choosing the Excel solution was an easy decision to make. Iain C Kerr - Operations Director *"Opting for Excel as our supplier for this project was a logical choice, driven by our extensive installation experience and confidence in Excel products' ability to provide a robust, future-proof, and comprehensive critical network infrastructure solution. The added value of bundling and safeguarding all products under Excel's 25-year warranty is a win-win for both North and, more importantly, our valued client."*

Excel offer Toolbox training on site, and this can be invaluable for ensuring consistency allowing the End-User to see the partnership between Installer and Manufacturer firsthand. A full 25-year warranty performance was required for the entire network including CCA-rated copper and fibre cables.

We needed to ensure that we complied with BS6701:2016+A1:2017 CPR standards, which states for new installations and the refurbishment or extension of existing installations within the external fire barrier of the building, installation cables which are subject to the CPR shall as a minimum meet the requirements of Euroclass Cca, s1b, d2, a2. Excel offer their Cat6a U/FTP cable with a B2ca rated sheath giving us the perfect rating for the hospital environment.



## The result

Midland Metropolitan Hospital is a newly built hospital with a structured cabling designed to withstand current needs and future plans. Once fully completed the project and the end client will have a trusted and fully warranted system that they can rely on.

Excel House  
Junction Six Industrial Park  
Electric Avenue  
Birmingham B6 7JJ  
England

T: +44 (0) 121 326 7557  
F: +44 (0) 121 327 1537  
E: sales@excel-networking.com

[www.excel-networking.com](http://www.excel-networking.com)

Mayflex MEA DMCC  
Office 22A/B  
AU (Gold) Tower  
Cluster I  
Jumeirah Lake Towers (JLT)  
Dubai  
United Arab Emirates  
PO Box 293695

T: +971 4 421 4352  
F: +971 4 421 5814  
E: mesales@mayflex.com

**excel**  
without compromise.