

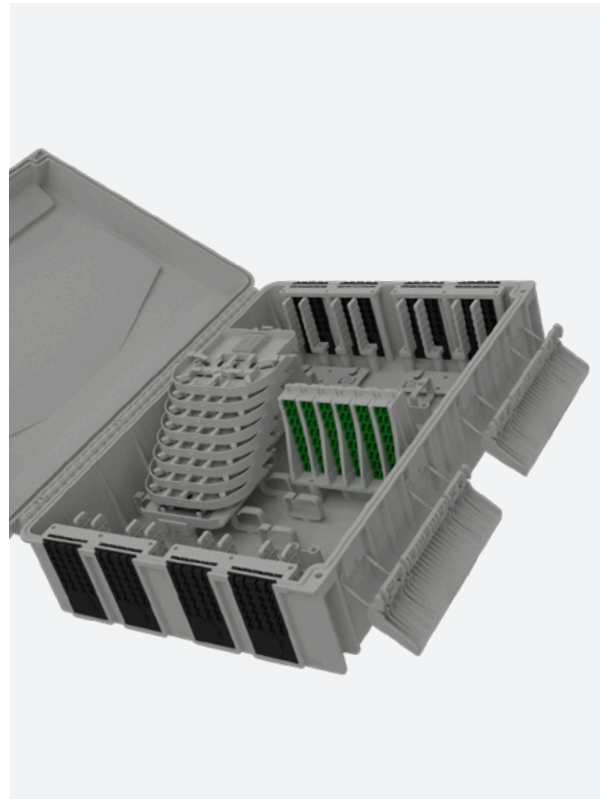


Encasa

96 Fibre Distribution Point



ENCASA 96 FIBRE DISTRIBUTION POINT



PRODUCT OVERVIEW

The Encasa range of fibre distribution points have been designed to fit within the FTTx network. These enclosures can be aerial, or wall mounted. Made from 100% virgin UL94-V0 rated material, UV stable and are IP56 rated, allowing them to be used in both internal and external applications.

This Encasa fibre distribution point accommodates 96 fibres (using LC connections) or 48 fibres (using SC connections). Flexibility is increased through the option to use the enclosure for traditional splicing of cables with a capacity of 192 fibres and the installation of pre-terminated cables via the 120 split gland cable exit points 96 on the top and bottom of the enclosure that accept both flat and round cable.

The use of splitters is also possible with mounting positions for up to 24 units found under the splice trays.

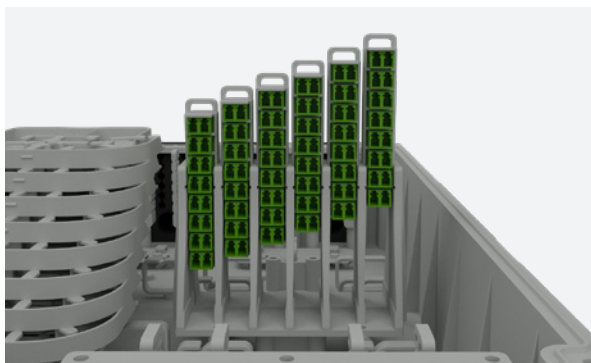
Each enclosure comes pre-loaded with APC adaptors and splitters. The splitters are terminated with APC connections on the outgoing end and unterminated on the incoming end as standard. Options are available to have adaptors and standard pigtails or loaded with adaptors only.

The adaptor field has been designed so each stack of adaptors can be pulled up to allow better access to plug and unplug connections.

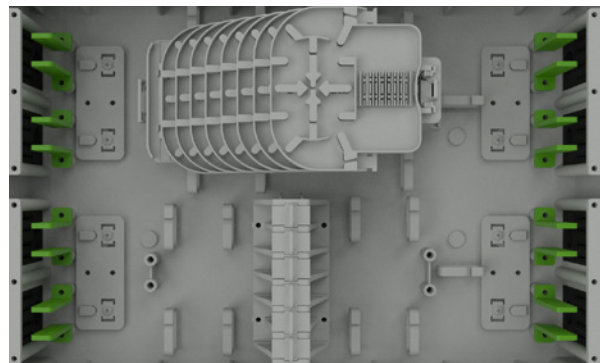
The cable entry points allow for midspan cable installation and for cable to be passed through to feed further enclosures in the network.

Integrated fibre management allows 250µm and 900µm fibre to be installed, keeping the fibres safe and always maintaining the required bend radius.

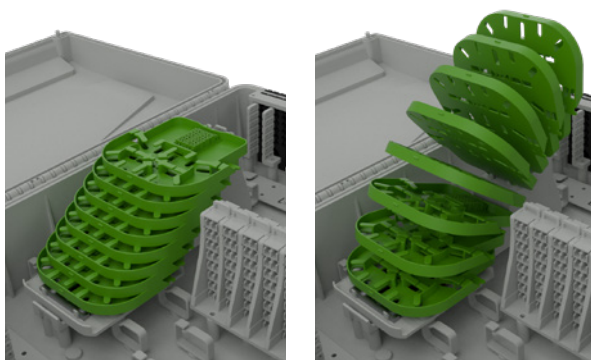
PRODUCT FEATURES



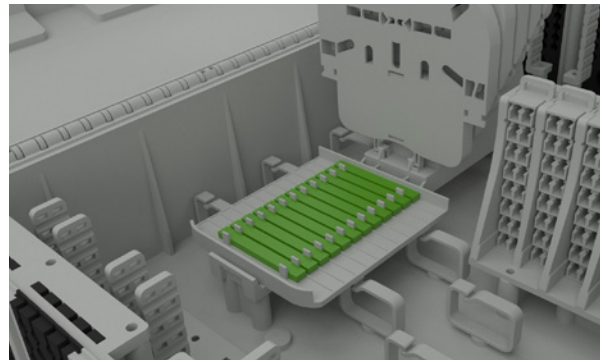
Adaptor Field



Cable Tie Points



Splice Trays



Splitter Area

GENERAL

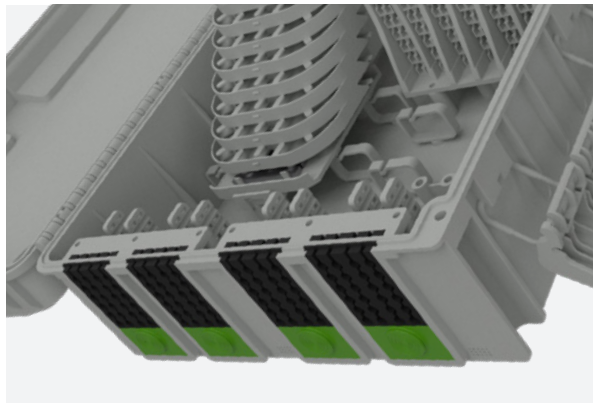
Maximum number of fibres	48 SC or 96 LC
Maximum number of splice trays	8
Maximum number of fibres per tray	24
Maximum number of splices	192
Adaptor type	SC Simplex/LC Duplex
Maximum number of adaptor positions	48
IP rating	IP56 - suitable for internal and external installations
UV stable	Yes
Material	ABS+PC
UL94-V0	Yes
Colour	Light grey (RAL 7035) or black (RAL 9005) Other colours available subject to MOQ
Dimensions (mm)	450mm H x 340mm W x 152mm D

SPLITTER OPTIONS

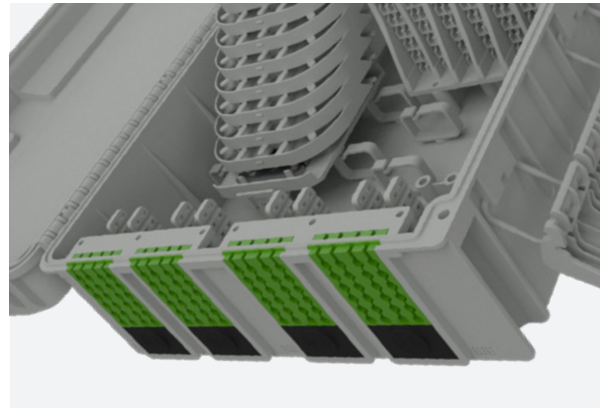
1:4 plc splitter	Maximum of 24
1:8 plc splitter	Maximum of 12
1:16 plc splitter	Maximum of 6
1:32 plc splitter	Maximum of 3

CABLE ENTRY AND EXIT PARAMETERS

Number of feeder cable entry points	4 top and 4 bottom
Midspan capability	Yes
Cable diameter using compression gland	5mm – 13.5mm
Cable diameter using rubber grommet	5mm – 20mm
Number of cable exit points	96 top and 96 bottom
Cable diameter	3mm – 6mm



Cable Entry Points



Cable Exit Points

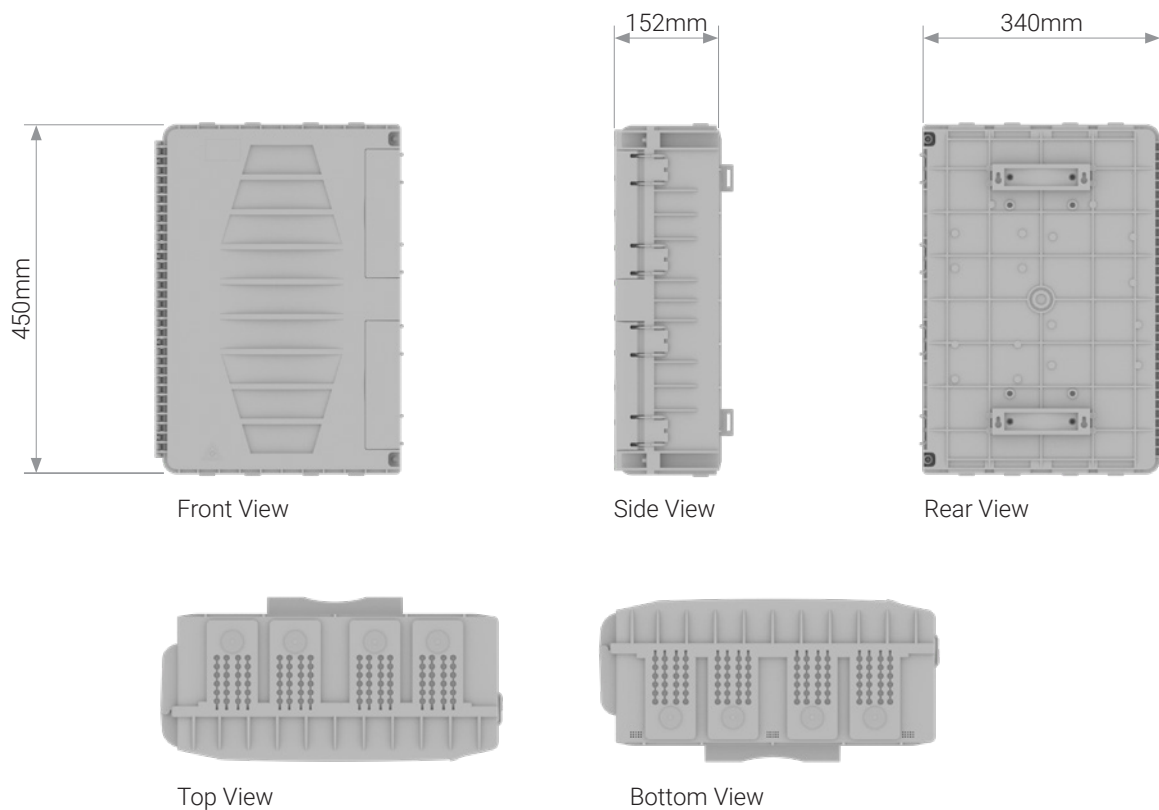
LC AND SC APC ADAPTOR SPECIFICATION

Insertion loss	< 0.2 dB
Durability (500 mating)	< 0.2 dB max increase
Operating temperature	-40°C to 80°C
Retention force	200 - 600 grams
Alignment sleeve material	Ceramic
Flammability rated	UL94-V0
Polish type	APC

SPLITTER SPECIFICATION

	1x4	1x8	1x16	1x32
Operating wavelength	1260 to 1650 nm			
Fibre type	G657A2			
Temperature stability (dB) at -40°C to 85°C	≤0.4	≤0.4	≤0.5	≤0.5
Storage temperature	-40°C to 85°C			
Return loss	≥55dB			

DIMENSIONS



PART NUMBER INFORMATION

Part Number	Product Description
996-000	Encasa 96 fibre distribution point loaded with 64 x LCA adaptors + 16 x 1:4 splitters grey
996-001	Encasa 96 fibre distribution point loaded with 96 x LCA adaptors + 24 x 1:4 splitters grey
996-002	Encasa 96 fibre distribution point loaded with 64 x LCA adaptors + 8 x 1:8 splitters grey
996-003	Encasa 96 fibre distribution point loaded with 96 x LCA adaptors + 12 x 1:8 splitters grey
996-004	Encasa 96 fibre distribution point loaded with 64 x LCA adaptors + 4 x 1:16 splitters grey
996-005	Encasa 96 fibre distribution point loaded with 96 x LCA adaptors + 6 x 1:16 splitters grey
996-006	Encasa 96 fibre distribution point loaded with 64 x LCA adaptors + 2 x 1:32 splitters grey
996-007	Encasa 96 fibre distribution point loaded with 96 x LCA adaptors + 3 x 1:32 splitters grey
996-008	Encasa 96 fibre distribution point loaded with 48 x SCA adaptors + 3 x 1:16 splitters grey

Design registration and patent pending.

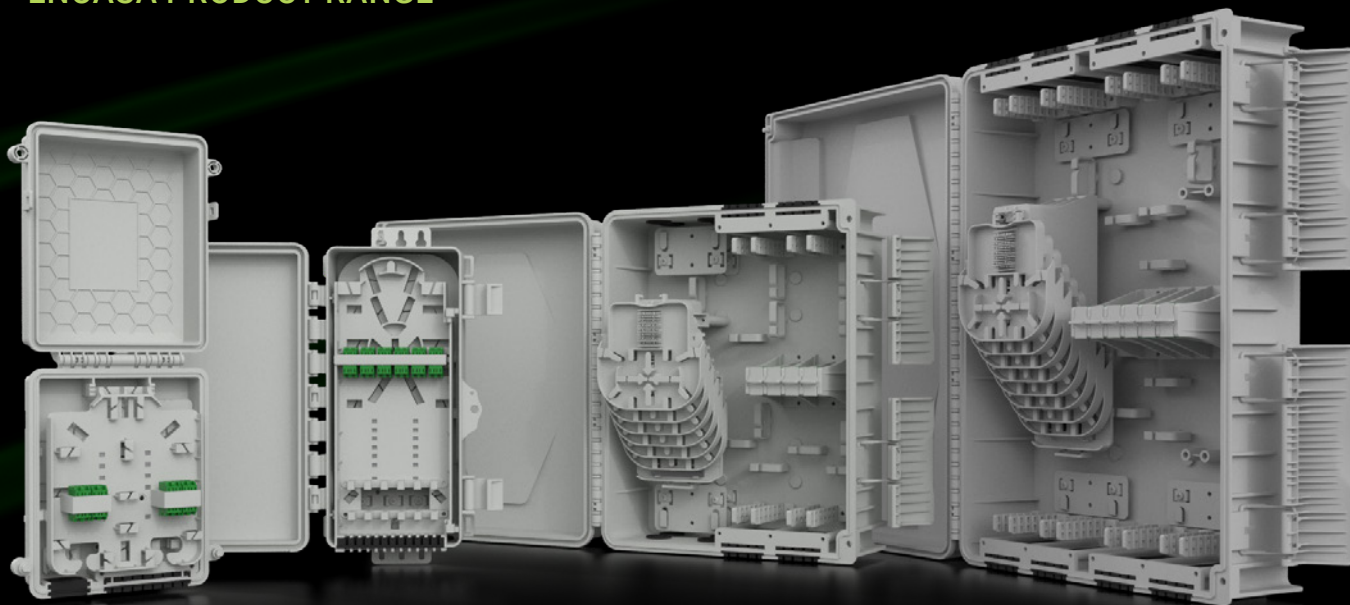


Excel House, Junction Six Industrial Park
Electric Avenue, Birmingham, B6 7JJ

Phone: 0800 75 75 65
Email: FTTx@mayflex.com

www.excel-networking.com

ENCASA PRODUCT RANGE



The Encasa range from Excel provides flexible, easy to use enclosures with a range of connection options and capacities, complemented by fast to install pre-connectorised cables.