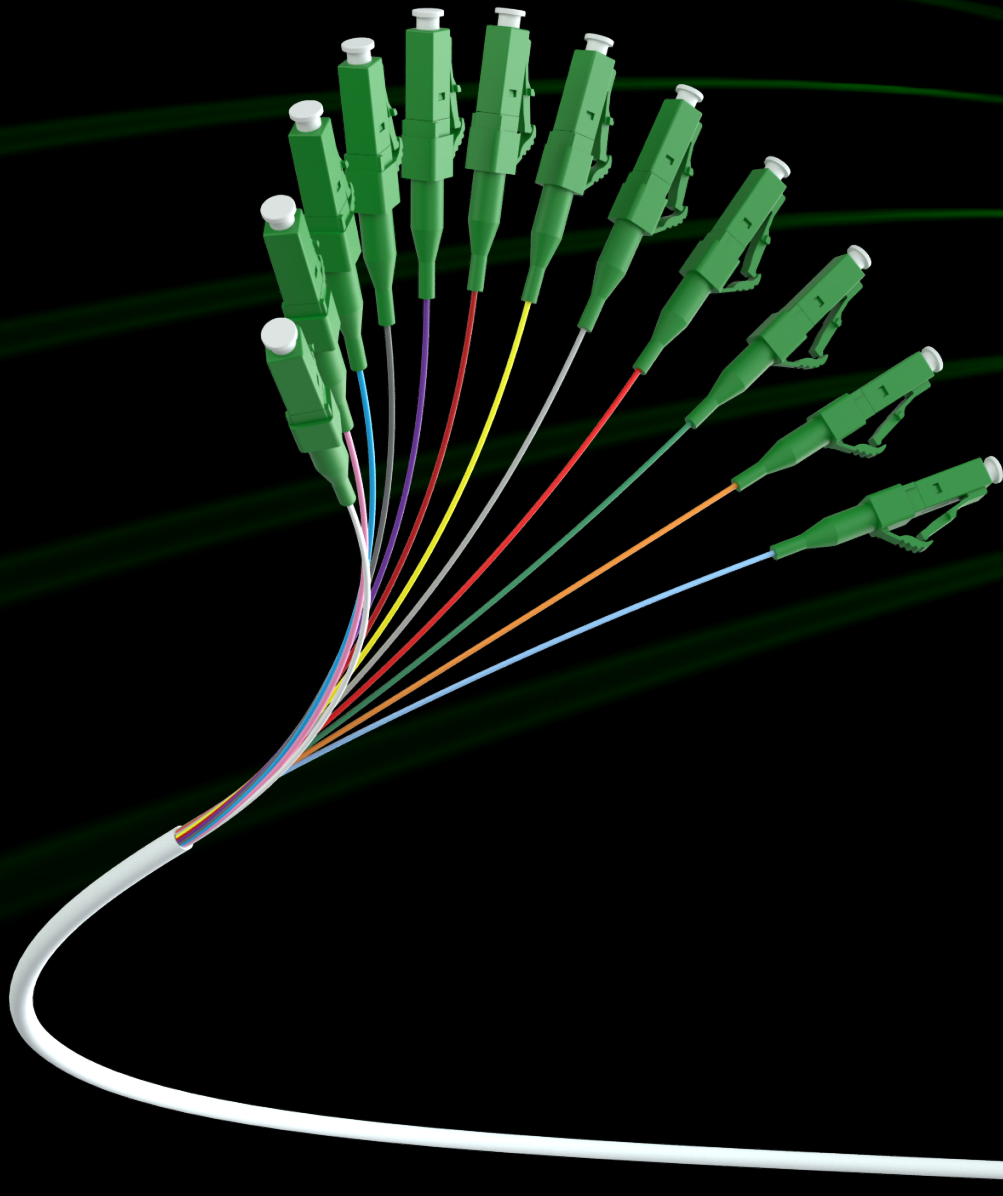




# Encasa

## 8 to 24 Fibre Corridor Cable



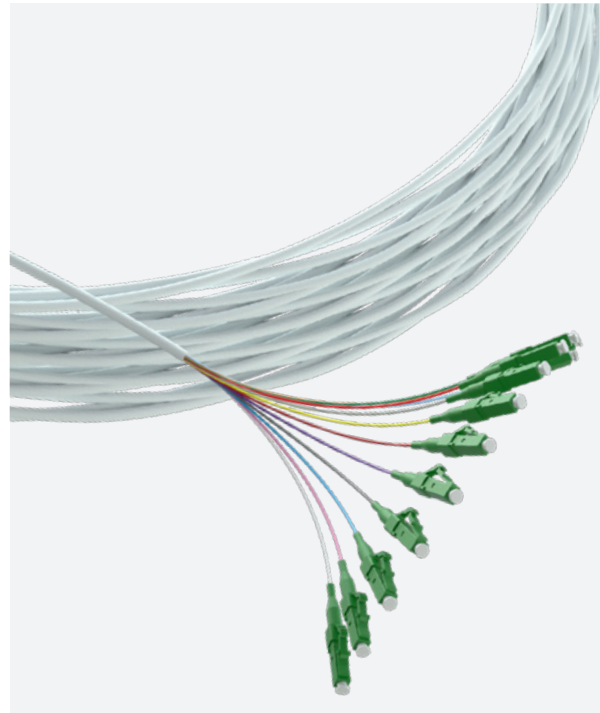
## ENCASA 2MM CORRIDOR CABLE

### PRODUCT OVERVIEW

The Excel Encasa 8 to 24 fibre corridor cable has been designed for multi dwelling applications, the cable is constructed with 8 to 24 colour coded 900 µm G657B3 tight buffered fibres, covered with a flame retardant, low smoke zero halogen CPR Euroclass Cca outer sheath.

The cable is designed in such a way that it allows mid span window cuts to be made to enable the installer to pull out a single fibre to feed the apartment or room being passed.

This cable can be installed along corridors with or without ceiling voids using adhesive if required.



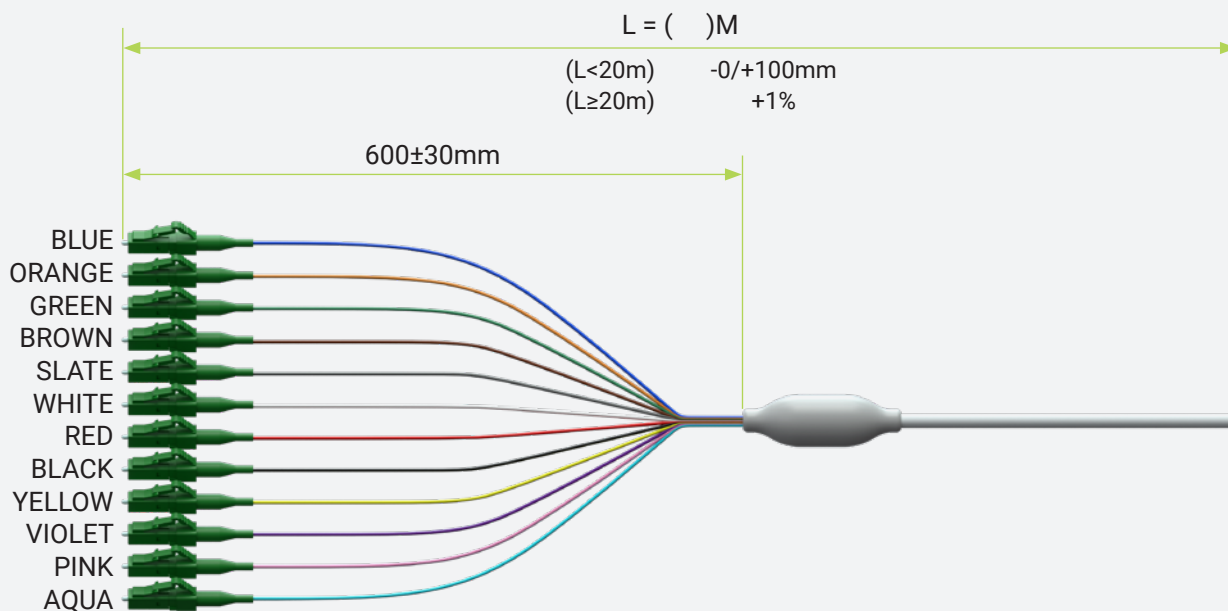
### FIBRE SPECIFICATION

Insertion loss (dB)	@1310nm	≤0.3 dB
Return loss (dB)	@1310nm	>65 dB
Maximum tensile strength (N)	Short term	160
	Long term	80
Minimum bend radius (mm)	Dynamic	20 x diameter
	Static	10 x diameter
Maximum crush resistance (N/100mm <sup>2</sup> )	Short term	500
	Long term	100
Maximum attenuation (dB)	@1310nm	≤0.35 dB
	@1550nm	≤0.21 dB
Durability		500 matings
Fibre type		G.657.B3
Outer jacket material		LSZH
Overall cable diameter		3 mm
Operational temperature		-20°C to 70°C

## PRODUCT SPECIFICATION

Number of cores	8 to 24
Type of tube	Tight
Fibre type single mode	9/125
Category	OS2
Armouring	No
Rodent resistant	No
Outer sheath material	Copolymer, thermoplastic (LS0H)
Outer sheath colour	White
Reaction-to-fire class according to EN 13501-6	Cca
Smoke development class according to EN 13501-6	s1b
Euro class flaming droplets/particles according to EN13501-6	d0
Euro class acidity according to EN 13501-6	a1
Halogen free (acc. EN 60754-1/2)	Yes
Flame retardant	In accordance with EN 50399
Low smoke (acc. BS EN 61034-2)	Yes
Outer diameter approx.	2 mm

## CABLE DIAGRAM



## PART NUMBER INFORMATION

Part Number	Product Description
207-102-100	Excel Encasa OS2 Singlemode G.657.B3 Corridor Cable 8 Core 9/125 LCA to Open Ended 100 m
207-102-30	Excel Encasa OS2 Singlemode G.657.B3 Corridor Cable 8 Core 9/125 LCA to Open Ended 30 m
207-102-40	Excel Encasa OS2 Singlemode G.657.B3 Corridor Cable 8 Core 9/125 LCA to Open Ended 40 m
207-102-50	Excel Encasa OS2 Singlemode G.657.B3 Corridor Cable 8 Core 9/125 LCA to Open Ended 50 m
207-102-60	Excel Encasa OS2 Singlemode G.657.B3 Corridor Cable 8 Core 9/125 LCA to Open Ended 60 m
207-102-70	Excel Encasa OS2 Singlemode G.657.B3 Corridor Cable 8 Core 9/125 LCA to Open Ended 70 m
207-102-75	Excel Encasa OS2 Singlemode G.657.B3 Corridor Cable 8 Core 9/125 LCA to Open Ended 75 m
207-101-100	Excel Encasa OS2 Singlemode G.657.B3 Corridor Cable 12 Core 9/125 LCA to Open Ended 100 m
207-101-30	Excel Encasa OS2 Singlemode G.657.B3 Corridor Cable 12 Core 9/125 LCA to Open Ended 30 m
207-101-40	Excel Encasa OS2 Singlemode G.657.B3 Corridor Cable 12 Core 9/125 LCA to Open Ended 40 m
207-101-50	Excel Encasa OS2 Singlemode G.657.B3 Corridor Cable 12 Core 9/125 LCA to Open Ended 50 m
207-101-60	Excel Encasa OS2 Singlemode G.657.B3 Corridor Cable 12 Core 9/125 LCA to Open Ended 60 m
207-101-70	Excel Encasa OS2 Singlemode G.657.B3 Corridor Cable 12 Core 9/125 LCA to Open Ended 70 m
207-101-75	Excel Encasa OS2 Singlemode G.657.B3 Corridor Cable 12 Core 9/125 LCA to Open Ended 75 m
207-105-100	Excel Encasa OS2 Singlemode G.657.B3 Corridor Cable 16 Core 9/125 LCA to Open Ended 100 m
207-105-30	Excel Encasa OS2 Singlemode G.657.B3 Corridor Cable 16 Core 9/125 LCA to Open Ended 30 m
207-105-40	Excel Encasa OS2 Singlemode G.657.B3 Corridor Cable 16 Core 9/125 LCA to Open Ended 40 m
207-105-50	Excel Encasa OS2 Singlemode G.657.B3 Corridor Cable 16 Core 9/125 LCA to Open Ended 50 m
207-105-60	Excel Encasa OS2 Singlemode G.657.B3 Corridor Cable 16 Core 9/125 LCA to Open Ended 60 m
207-105-70	Excel Encasa OS2 Singlemode G.657.B3 Corridor Cable 16 Core 9/125 LCA to Open Ended 70 m
207-105-75	Excel Encasa OS2 Singlemode G.657.B3 Corridor Cable 16 Core 9/125 LCA to Open Ended 75 m

For details on the the 24 Core Corridor Cable please contact the sales team at [FTTx@mayflex.com](mailto:FTTx@mayflex.com)



Excel House, Junction Six Industrial Park  
Electric Avenue, Birmingham, B6 7JJ

Phone: 0800 75 75 65  
Email: [FTTx@mayflex.com](mailto:FTTx@mayflex.com)

[www.excel-networking.com](http://www.excel-networking.com)

find out all about:

# Encasa

## 8 to 24 Fibre Corridor Cable

