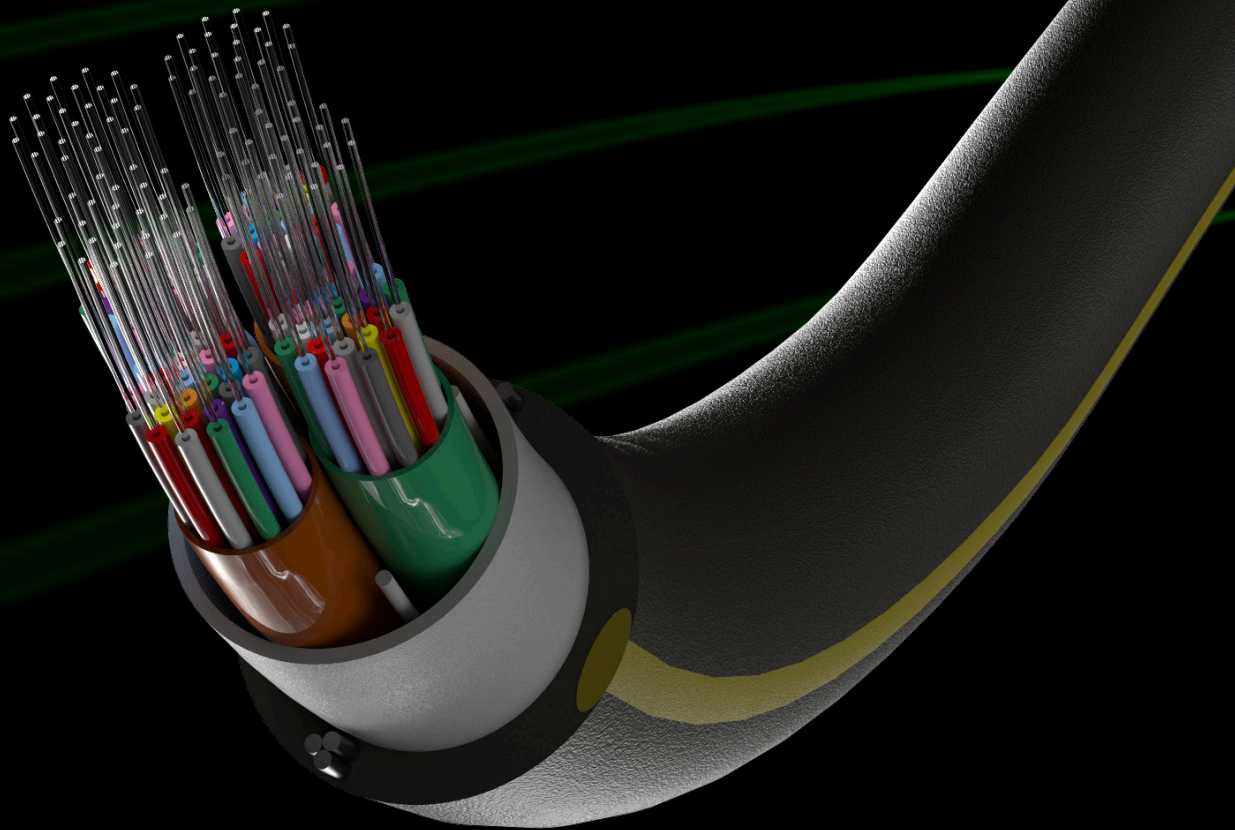




Enbeam OS2

96-Core Ultra-Light Weight Aerial Fibre Cable

Rodent Resistant G.657.A1



ENBEAM OS2 96-CORE ULTRA-LIGHT WEIGHT RODENT RESISTANT G.657.A1 AERIAL FIBRE CABLE

PRODUCT OVERVIEW

The cable is constructed from multiple gel filled micromodules, overlaid with water swellable yarn and water blocking tape and then covered with a High Density Polyethylene (HDPE) outer jacket with yellow stripes containing 2 brass coated steel wire strength members and offers a 96 fibre core count.

With the 7mm cable diameter allowing 96 fibres to be installed in a single cable run offers additional cost savings to the installation, including reduced PIA fees, decreased installation time and in addition to this the poles will become less congested with multiple cable runs.

FIBRE SPECIFICATION

Attenuation	@1310nm	≤0.35 dB/km
	@1550nm	≤0.21 dB/km
	@1625nm	≤0.23 dB/km
Chromatic dispersion coefficient	1285nm – 1330nm	≤3.5ps/km·nm
	@1550nm	≤18.0ps/km·nm
	1565nm – 1625nm	≤22.0ps/km·nm
Zero dispersion wavelength - λ_0		1300-1324nm
Zero dispersion slope		≤0.092 ps/(km·nm ²)
Cut-off Wavelength - λ_{cc}		<1250 nm
Polarization mode dispersion	Individual fibre	≤0.1ps/√Km
	Design link value	≤0.06ps/√Km
Macro bending loss	100 turns, 50mm radius	≤0.05dB@1310/1550nm
	100 turns, 60mm radius	≤0.05dB@1625nm
Cladding diameter		125.0±0.7µm
Cladding non-circularity		≤1.0%
Primary coating diameter		242±5µm
Primary coating material		UV Cured Acrylite
Core - Cladding concentricity error		≤0.5µm
Coating - Cladding concentricity error		≤12µm
Fibre curl radius		≥4m
Mode field diameter	@1310nm	8.8±0.4µm
	@1550 nm	10.3±0.5µm
Proof stress level		1.0% (100kpsi)

PRODUCT SPECIFICATION

Type of tube	Loose tube
Fibre type	Single mode 9/125
Category	OS2
Outer sheath material	HDPE
Outer sheath colour	Black
Reaction-to-fire class according to EN 13501-6	Fca
UV resistant	yes
Outer diameter approx.	7 mm

KEY FEATURES

- G.657.A1 Bend insensitive
- Rodent resistant
- Reduced cable storage
- Less pole congestion
- Lower PIA charges
- Lower Installation costs

328-096

Number of Cores	96
Number of fibres per tube	24

12F to 48F also available.



Excel House, Junction Six Industrial Park
Electric Avenue, Birmingham, B6 7JJ

Phone: 0800 75 75 65
Email: FTTx@mayflex.com

www.excel-networking.com

find out all about:

Enbeam OS2

96-Core Ultra-Light Weight Aerial Fibre Cable

Rodent Resistant G.657.A1

