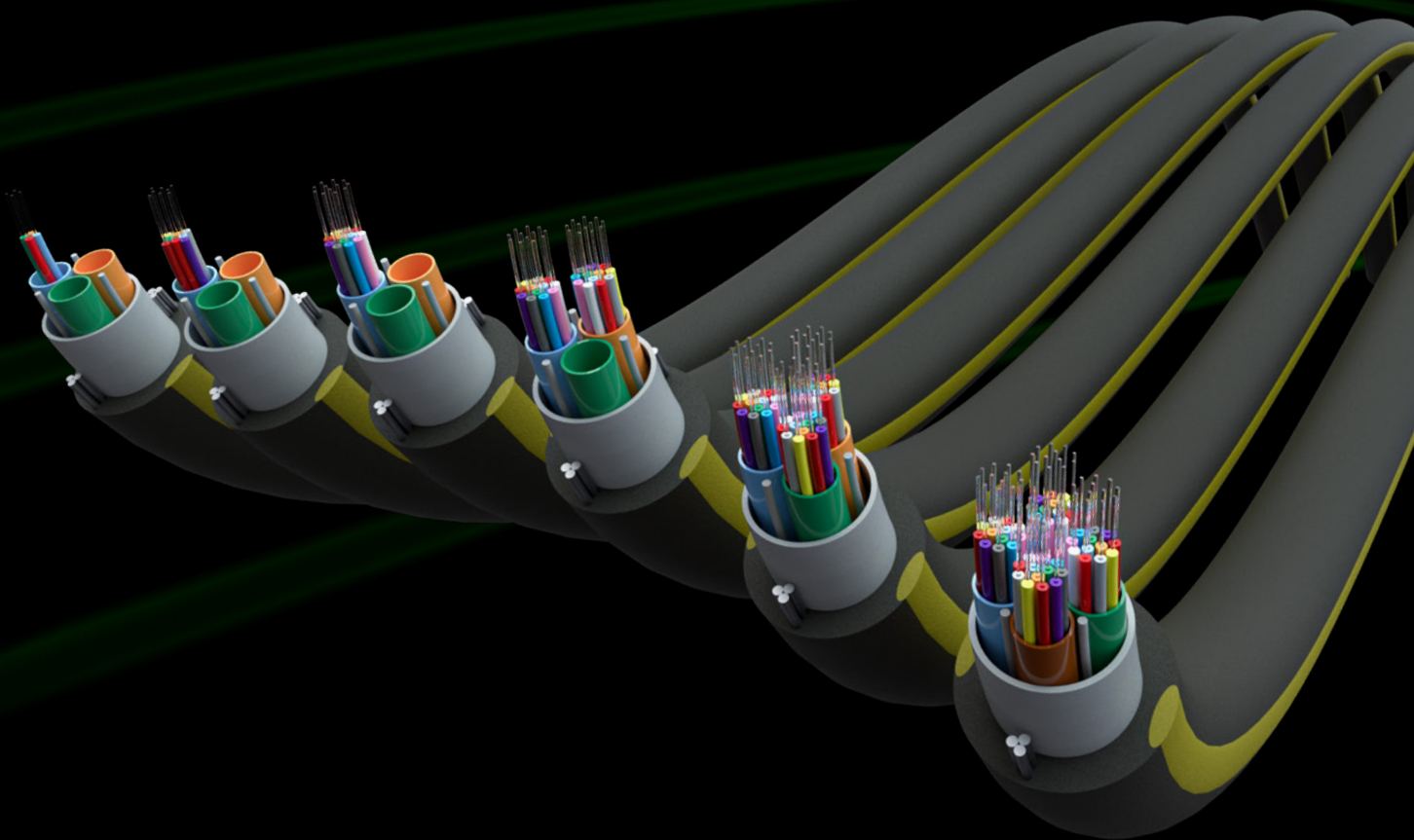




# Enbeam OS2

## Ultra-Light Weight Aerial Fibre Cable Loose

Rodent Resistant G.657.A1



## ENBEAM OS2 ULTRA-LIGHT WEIGHT RODENT RESISTANT G.657.A1 AERIAL FIBRE CABLE LOOSE

### PRODUCT OVERVIEW

The cable is constructed from multiple gel filled micromodules, overlaid with water swellable yarn and water blocking tape and then covered with a High Density Polyethylene (HDPE) outer jacket with yellow stripes containing 2 brass coated steel wire strength members and offers 12 to 48 fibre core counts.

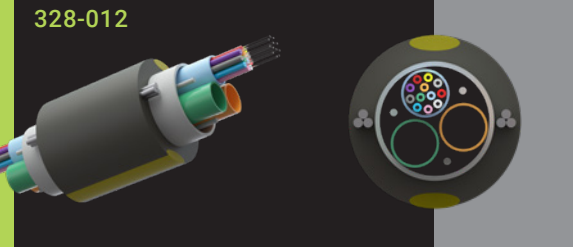
### FIBRE SPECIFICATION

Attenuation	@1310nm	≤0.35 dB/km
	@1550nm	≤0.21 dB/km
	@1625nm	≤0.23 dB/km
Chromatic dispersion coefficient	1285nm – 1330nm	≤3.5ps/km·nm
	@1550nm	≤18.0ps/km·nm
	1565nm – 1625nm	≤22.0ps/km·nm
Zero dispersion wavelength - $\lambda_0$		1302-1324nm
Zero dispersion slope		≤0.092 ps/(km·nm <sup>2</sup> )
Cut-off Wavelength - $\lambda_{cc}$		1100-1320nm
Polarization mode dispersion	Individual fibre	≤0.1ps/√Km
	Design link value	≤0.04ps/√Km
Macro bending loss	100 turns, 50mm radius	≤0.05dB@1310/1550nm
	100 turns, 60mm radius	≤0.05dB@1625nm
Cladding diameter		125.0±0.7µm
Cladding non-circularity		≤1.0%
Primary coating diameter		242±5µm
Primary coating material		UV Cured Acrylite
Core - Cladding concentricity error		≤0.5µm
Coating - Cladding concentricity error		≤12µm
Fibre curl radius		≥4m
Mode field diameter	@1310nm	9.2±0.4µm
	@1550 nm	10.4±0.5µm
Proof stress level		1.0% (100kpsi)

## PRODUCT SPECIFICATION

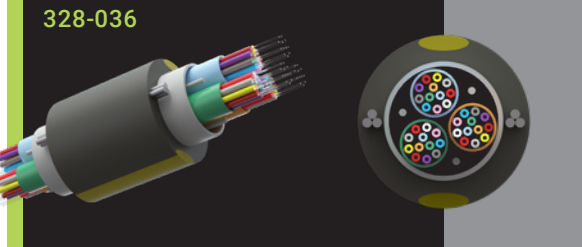
Type of tube	Loose tube
Fibre type	Single mode 9/125
Category	OS2
Outer sheath material	HDPE
Outer sheath colour	Black
Reaction-to-fire class according to EN 13501-6	Fca
UV resistant	yes
Outer diameter approx.	7 mm

**328-012**



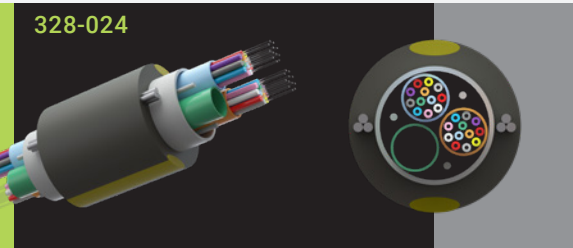
Number of Cores	12
Number of fibres per tube	12

**328-036**



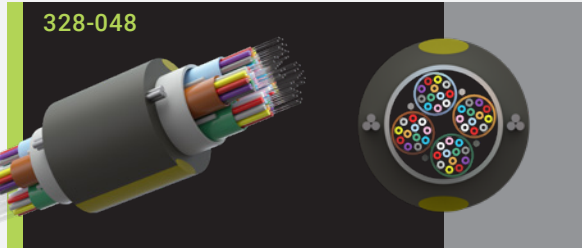
Number of Cores	36
Number of fibres per tube	12

**328-024**



Number of Cores	24
Number of fibres per tube	12

**328-048**



Number of Cores	48
Number of fibres per tube	12

**96F available from June 2023**



Excel House, Junction Six Industrial Park  
Electric Avenue, Birmingham, B6 7JJ

Phone: 0800 75 75 65  
Email: [FTTx@mayflex.com](mailto:FTTx@mayflex.com)

[www.excel-networking.com](http://www.excel-networking.com)

find out all about:

## **Enbeam OS2** Ultra-Light Weight Aerial Fibre Cable Loose

Rodent Resistant G.657.A1

