

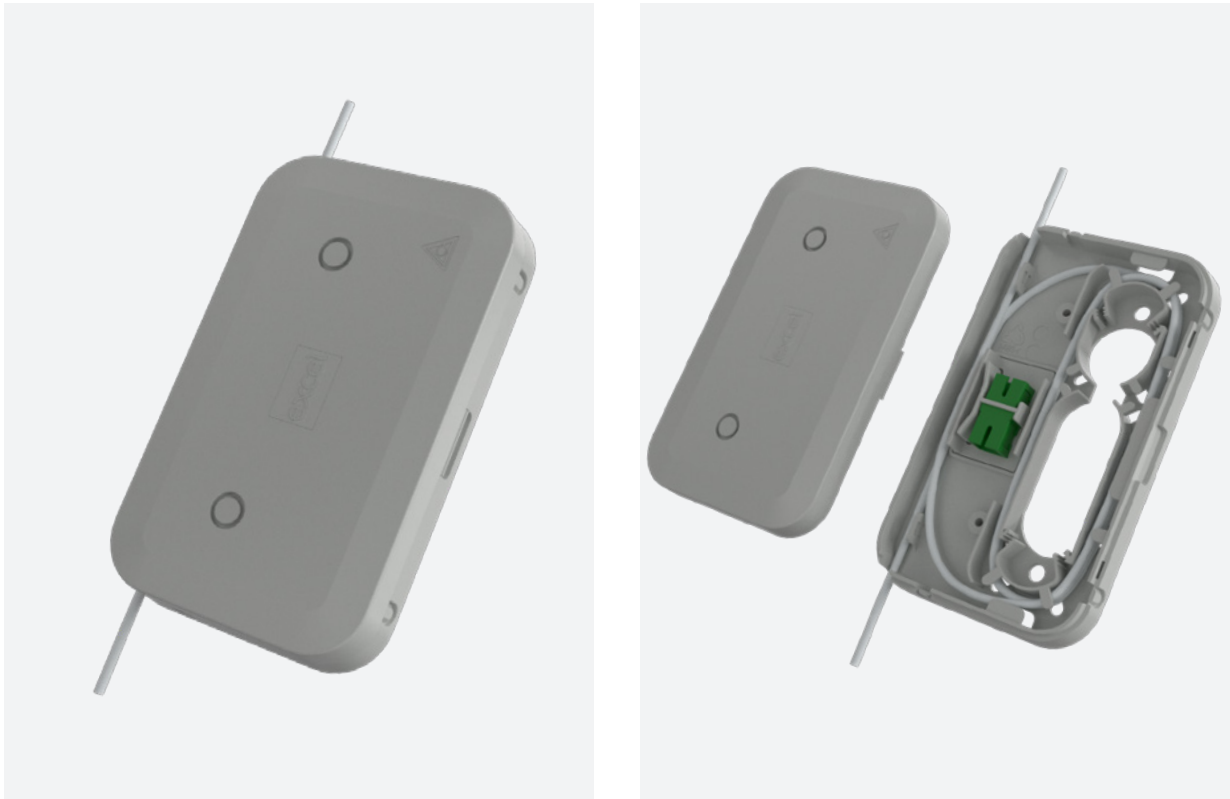


Encasa

Point of Entry Enclosure



ENCASA POINT OF ENTRY ENCLOSURE



PRODUCT OVERVIEW

The Encasa point of entry box has been designed for the fibre to be passed through the enclosure allowing fibre to be distributed to apartments in multi dwellings applications. The enclosure has multiple cable entry points, a cable storage area, holds up to 2 splice protectors and has a single position to house either a SC simplex or LC duplex adaptor.

Flexibility is increased as the enclosure has latch points on both sides of the lid to allow it to be opened from the top or bottom when installed at high or low levels.

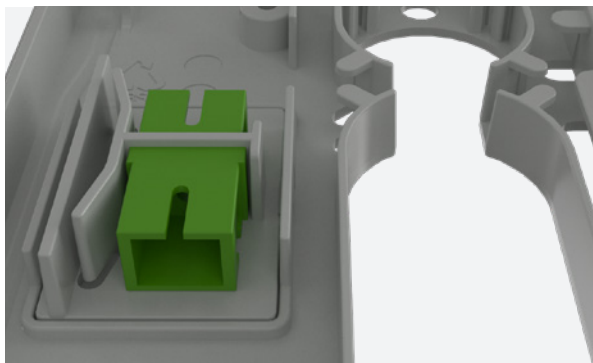
In addition to the adaptor housing, we have included a 16-way splice holder that is interchangeable with the adaptor plate, allowing the enclosure to be used for direct splicing.

The cable storage area accommodates 2mm to 3mm cable with a maximum of 2mtr 2mm and 1mtr 3mm.

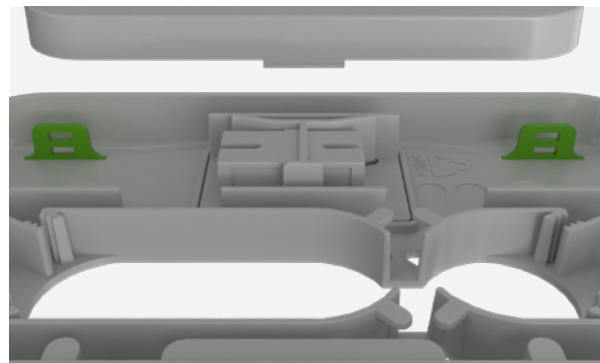
Each enclosure comes pre-loaded with APC adaptors and 1mtr G657.A2 pigtailed as standard, with an option to have adaptors only or longer pigtailed installed if required.

Each enclosure includes a fire clip which retains the fibre in position, should a fire break out within the building, ensuring compliance to the building regulations.

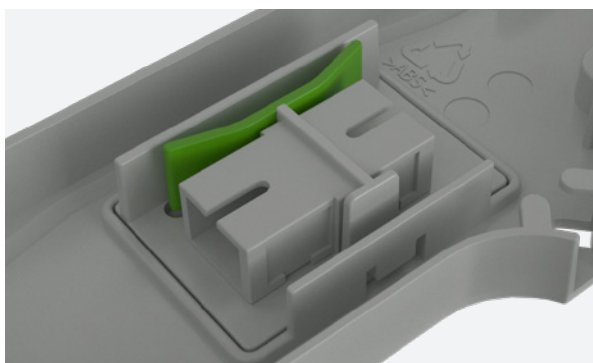
PRODUCT FEATURES



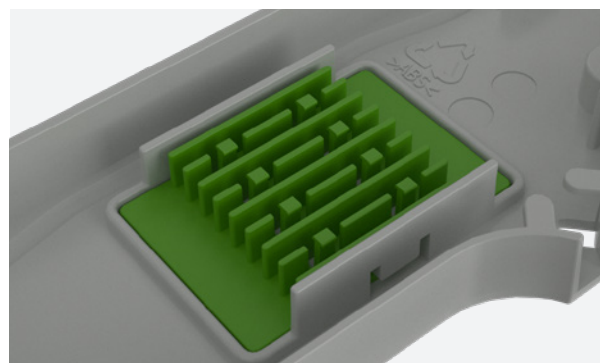
Adaptor Field



Cable Tie Points



Splice Area



16 Splice Option

GENERAL

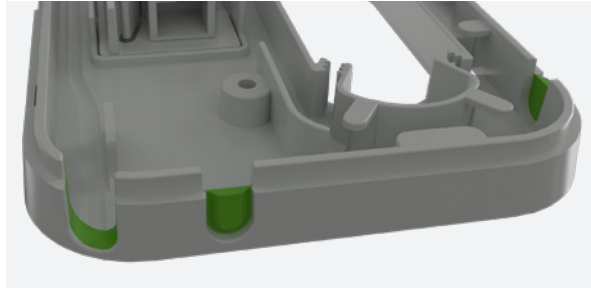
Maximum number of fibres	1 SC Simplex or 1 LC Duplex
Maximum number of splices	2
Adaptor type	SC Simplex or LC Duplex
Maximum number of adaptor positions	1
Maximum cable storage capacity	2mm = 2mtr 7 turns 3mm = 1mtr 3 turns
IP rating	IP20 - suitable for internal installations only
Material	ABS
UL94-V0	Yes
Colour	White (RAL9003)
Dimensions (mm)	90mm H x 148mm W x 22mm D

SPLICE ONLY OPTIONS

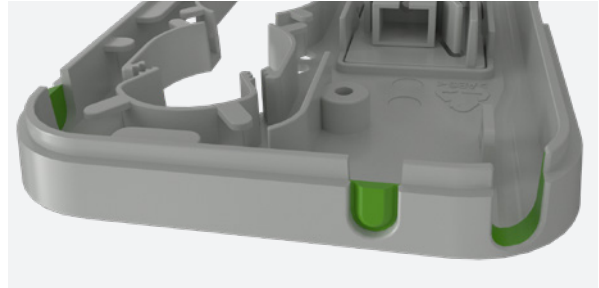
Maximum number of fibres	16
Maximum number of splices	16

CABLE ENTRY PARAMETERS

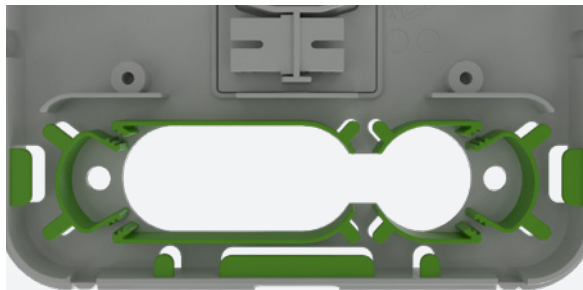
Number of cable entry points	6
Cable diameter	2mm – 6mm



Cable Entry Points



Cable Exit Points



Cable Storage Area



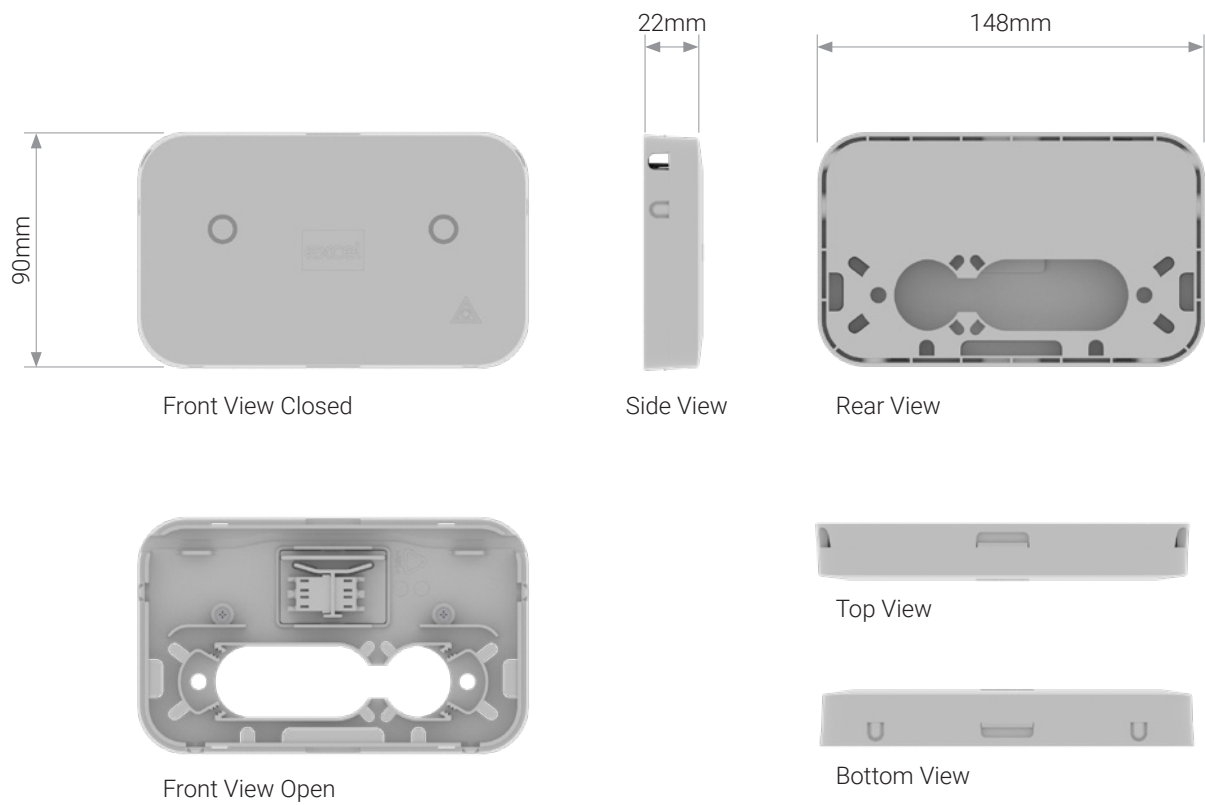
Fire Clip

LC AND SC APC ADAPTOR SPECIFICATION

Insertion loss	< 0.2 dB
Durability (500 mating)	< 0.2 dB max increase
Operating temperature	-40°C to 80°C
Retention force	200 - 600 grams
Alignment sleeve material	Ceramic
Flammability rated	UL94-V0
Polish type	APC

PIGTAIL SPECIFICATION

Construction	Easy-strip
Diameter	900 micron
Temperature range	-20°C to 70°C
Minimum bend radius	10 x cable diameter
Connector ferrule SC type	2.5mm zirconium ceramic
Connector ferrule LC type	1.25mm zirconium ceramic
Connector insertion loss	Max. 0.3dB
Ferrule end face (singlemode APC)	Max. -60dB



PART NUMBER INFORMATION

Part Number	Product Description
900-100	Encasa point of entry box loaded with 1 x SCA simplex adaptor + 1 x 1mtr pigtail
900-101	Encasa point of entry box loaded with 1 x LCA duplex adaptor + 2 x 1mtr pigtails

Design registration and patent pending.

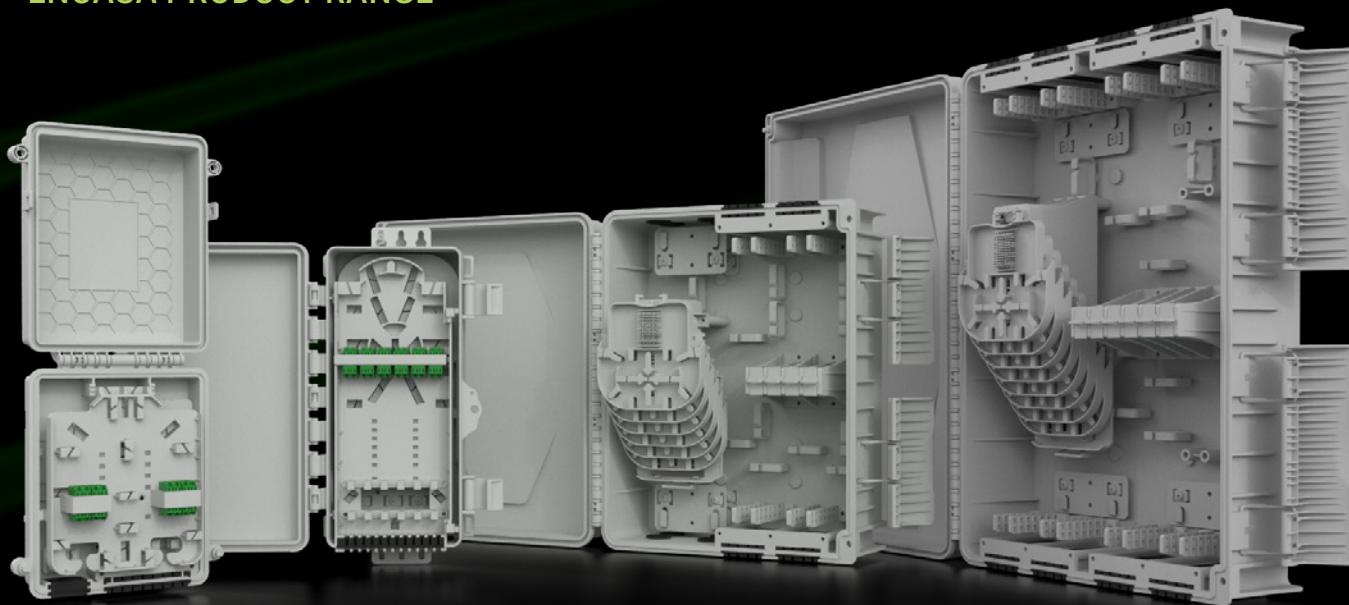


Excel House, Junction Six Industrial Park
Electric Avenue, Birmingham, B6 7JJ

Phone: 0800 75 75 65
Email: FTTx@mayflex.com

www.excel-networking.com

ENCASA PRODUCT RANGE



The Encasa range from Excel provides flexible, easy to use enclosures with a range of connection options and capacities, complemented by fast to install pre-connectorised cables.